

February — April 2026

# DISCOVER



Winter Reading Program | Local Author Fest | National Library Week | Fishers Make-Off | Seed Library



**HAMILTON EAST**  
PUBLIC LIBRARY



# In This Issue

Winter Reading Program	4
Local Author Fest	6
National Library Week	7
Programs for Children	8
Programs for Teens	10
Programs for Adults	12
Crossroads Discovery Center	14
Disability Awareness Month	15
Ignite Studio	16
Fishers Make-Off	17
Growing Together: How a Seed	18
Library Helped a School Garden	
Bloom	

Cover: Sand Creek Elementary staff and students with their gardening tools.  
*Photograph by: Claire Robertson, HSE High School Externship*



Subscribe to our enewsletter to stay updated on all library happenings!



@HamiltonEastPL

# Discover Guide

The *Discover Guide* is a quarterly publication of the Hamilton East Public Library, providing info on library events, services, and resources.



## Highlights

**Winter Reading Program**  
From February 1 – 28, catch the Olympic spirit with Hamilton East’s annual Winter Reading Challenge! Celebrate the 2026 Winter Olympics by logging your reading time and earning Olympic-inspired badges throughout the month.

**Local Author Fest**  
Join us for the 2026 HEPL Local Author Fest the weekend of April 18-19. The festival supporting local authors features writing and publishing workshops on Saturday, followed by the long-running annual HEPL Local Author Fair on Sunday.

**Celebrate National Library Week 2026 with the Treehouse Ten!**  
This April, we’re bringing a little woodland wonder into the library with our first ever set of collectible library trading cards, featuring the Treehouse Ten, a team of charming mascots inspired by wildlife native to Indiana.

**Fishers Make-Off**  
Showcasing the ways artists elevate and utilize Ignite’s resources, Ignite Studio will host its third annual Make-Off on March 21.

**Seed Library**  
The Seed Library will open for the year on February 9. Read about how Sand Creek Elementary brought their school gardens to life with seeds from the Library!

# Community Spotlight



**Geist Half Marathon: Register Now**  
Registration for the 18th annual Geist Half Marathon, 10K, and 5K is now open! This family-friendly community tradition returns on Saturday, September 12. Register at GeistHalf.com.



**Stay Active at the Fishers Community Center**  
Residents and visitors can enjoy free access to the indoor track and the Fishers Community Center Indoor Playground by signing up for a Community Pass at FishersCommunityCenter.com.



**March Disability Awareness Month**  
This annual celebration features a series of special events and initiatives throughout the city, including the return of the Ally campaign, which invites residents to become advocates for disability inclusion. Learn more at fishersIN.gov/DisabilityAwareness.



**Embrace Downtown Noblesville**  
Embrace Downtown is the beginning of a long-discussed project to enhance safety and walkability, nurture a vibrant local economy, and invest in public infrastructure for a connected, inclusive community.



**Noblesville Boom**  
In 2025, the Noblesville Boom, the G League affiliate of the Indiana Pacers, kicked off their inaugural season inside The Arena at Innovation Mile. Check out where the most BOOMING moments happen!



**Shop Local**  
The City of Noblesville encourages you to shop local all year round to support local businesses, which are the heartbeat of our community.



# WINTER OLYMPICS

## Reading Challenge

## Join the Winter Reading Challenge!

From February 1 – 28, catch the Olympic spirit with Hamilton East's annual Winter Reading Challenge!

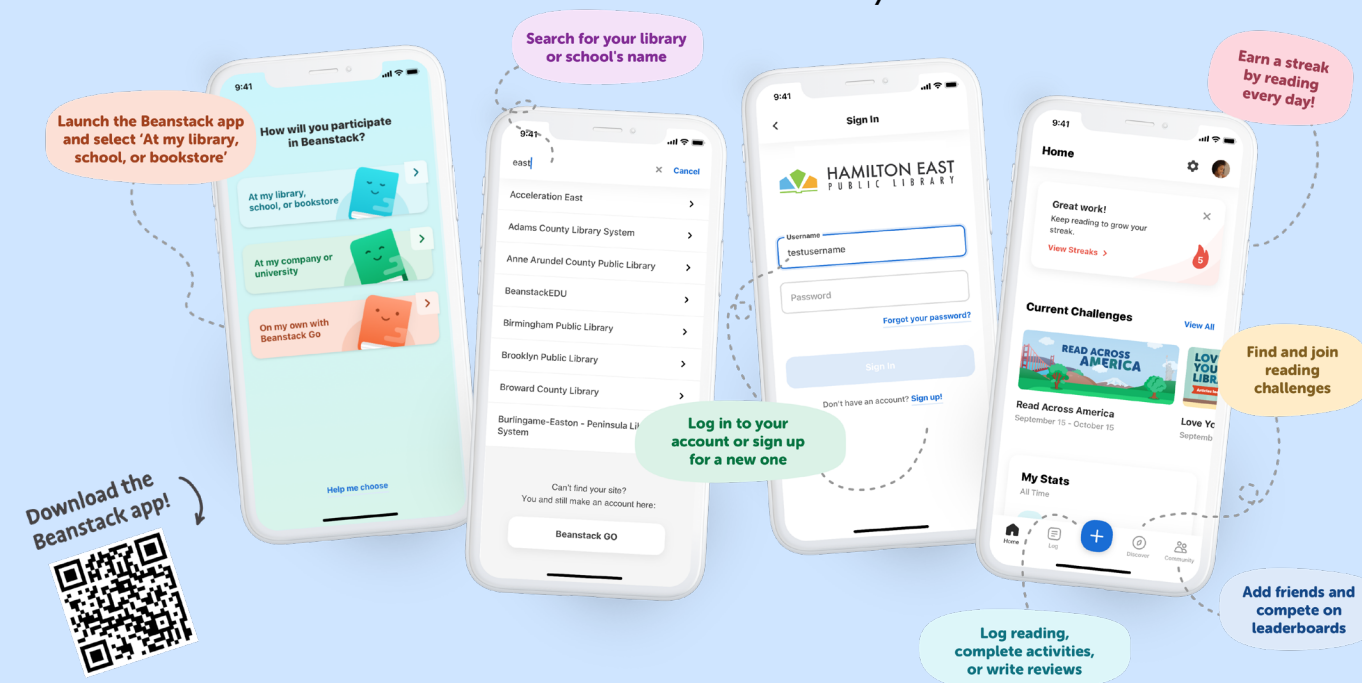
The 2026 Winter Olympics will be held in the Italian cities of Milan and Cortina d'Ampezzo. Athletes will compete in fun sports like skiing, snowboarding, and ice skating in the snowy mountains and on the ice.

Celebrate by logging your reading time and earning Olympic-inspired badges throughout the month.

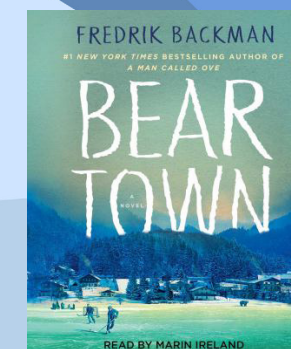
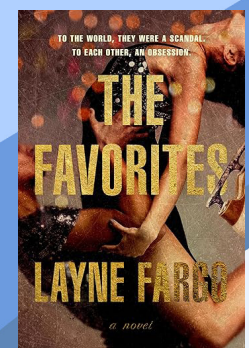
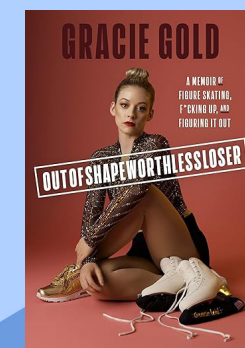
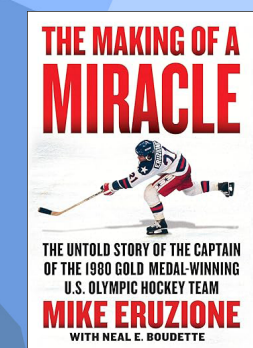
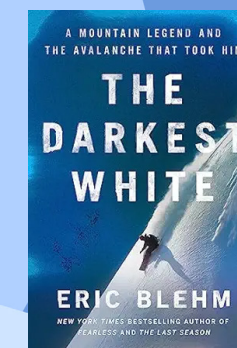
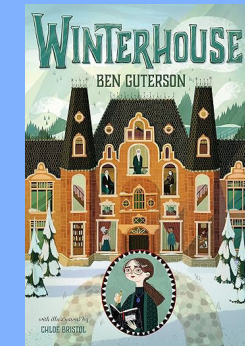
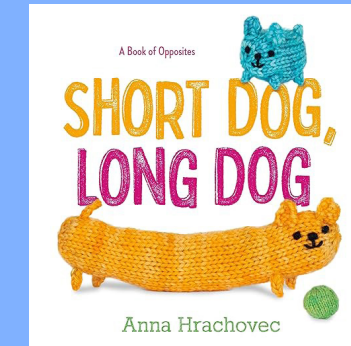
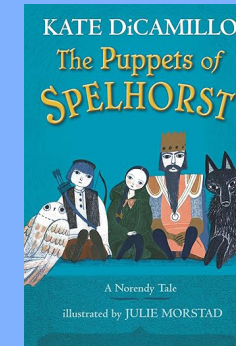
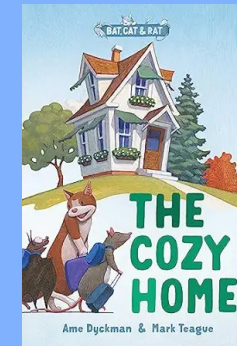
Read and log 300 minutes to complete the challenge! Every badge earns an e-ticket for a chance to win a \$25 gift card to a variety of retailers.

Drawings will be held the week of March 9th, and winners will be contacted via email or phone. TWO winners will be chosen randomly per gift card option.

Download the Beanstack app or visit our website to get started. Patrons with an existing Beanstack account can simply log in to join the challenge. Pre-registration starts on January 12.



## Winter Reading Booklists





# LOCAL AUTHOR FEST



APRIL 18-19, 2026

WRITING WORKSHOPS  
SATURDAY, APRIL 18  
10 AM - 4:30 PM  
NOBLESVILLE LIBRARY

LOCAL AUTHOR FAIR  
SUNDAY, APRIL 19  
1 PM - 4 PM  
HAMILTON COUNTY FAIRGROUNDS

Join us for the 2026 HEPL Local Author Fest! The festival supporting local authors features writing and publishing workshops on April 18, followed by the long-running annual HEPL Local Author Fair, an open house-style event for all ages on April 19.

The free writing and publishing workshops will be led by local authors and instructors Myra Levine, Michelle McGill-Vargas, Chris Clouser, and Professor Watermelon & Mister Smart. While free, registration is required for each workshop as space is limited. Registration opens on March 19. Visit the HEPL event calendar for full details on workshop topics and times.

The Local Author Fair is changing venues in 2026 and will take place at the Hamilton County Fairgrounds (2003 Pleasant St, Noblesville, IN 46060).

"Hamilton County and the surrounding areas are home to many talented Hoosier writers—some self-published, others

published through traditional houses. The HEPL Local Author Fair offers a unique opportunity to connect directly with dozens of authors and literary organizations while supporting local storytelling," said Systemwide Program Coordinator, Allison Kartman.

More than 60 local authors and literary organizations from Fishers, Noblesville, Carmel, Westfield, Indianapolis, and surrounding areas will participate and meet with the public. Attendees will have the chance to purchase books, enjoy author signings, and discover a wide range of genres—including picture books, mysteries, thrillers, action and adventure, true crime, biographies, romance, self-help, Indiana history, science fiction, and more. Plus, attendees will have opportunities to win books and other exciting prizes throughout the event!

Entry to the Local Author Fair is free, and all ages are welcome to attend, including children, teens, adults, and families. Parking at the Hamilton County Fairgrounds is also free.

## CELEBRATE NATIONAL LIBRARY WEEK 2026 WITH THE TREEHOUSE TEN

This April, we're bringing a little woodland wonder into the library with our first ever set of collectible library trading cards, featuring the Treehouse Ten, a team of charming mascots inspired by wildlife native to Indiana. Each mascot highlights a unique activity, resource, or experience available at our libraries, and we invite you to discover them all.

During National Library Week, April 19 - 25, you can collect, learn, and explore your way through the building as you earn each card by completing its matching activity. Check out a book to meet one character, visit our Seed Library to unlock another, or explore our Library of

Things to find your next favorite mascot. Every card reveals something special, whether it's a new tool to try, an event to enjoy, or a unique resource that you didn't know existed.

Designed for all ages, the Treehouse Ten encourages families, kids, teens, and adults to celebrate the library in a playful new way. Whether you're a seasoned library explorer or a first-time visitor, you'll have the chance to experience all the different ways a library can inspire you while collecting this limited-edition set.

Visit throughout the week, track your progress, and see how many members of the Treehouse Ten you can bring home. Collect all 10 cards to earn a prize and be entered into a drawing for a grand prize at the end of the week. Trade with friends, learn something new, and rediscover the magic waiting in every corner of the library.

Adventure is growing at the library - come collect it!





# For Children & Families

Check the online events calendar for full event details at [hepl.libnet.info/events](http://hepl.libnet.info/events). Programs with an asterisk (\*) require registration.

### Sticker Mania | Families

Wed. 2/4, 3/4, 4/1 | 3-4pm | NOB

### Masterpiece Makers\* | Ages 8-11

Fri. 2/6, 3/13, 4/3 | 1-3pm | FIS

### Family LEGO Challenge\* | Families

Wed. 2/4, 3/4, 4/1 | 4pm & 6pm | FIS

Thu. 2/12, 3/12, 4/9 | 4pm & 6pm | NOB

### Read to a Therapy Dog – Love on a Leash | Ages 5 & up

Sat. 2/7, 3/7, 4/4 | 11am-12pm | NOB

Sat. 2/14, 3/14, 4/11 | 11am-12pm | FIS

### Jr. Chef\* – Homeschool Edition

Tue. 2/10, 3/10, 4/14 | 1-2pm | NOB

### Full STEAM Ahead\* | Ages 8-11

Wed. 2/11, 3/11, 4/8 | 3-4pm | NOB

### Don't Let the Pigeon Have the Key!\* | Ages 6-8

Tue. 2/17 | 4-6pm | FIS

### Cool Crafting Club\* | Grades 1-5

Wed. 2/18, 3/18, 4/15 | 2-3pm & 6-7pm | NOB

### Mad Scientists\* | Ages 8-11

Wed. 2/18, 3/18, 4/15 | 6-7pm | FIS

Thu. 2/19, 3/19, 4/16 | 1:30-2:30pm | FIS | Homeschool Ed.

### Pokémon Club\* | Ages 6-11

Thu. 2/19, 3/19, 4/16 | 3-4pm | NOB

Wed. 2/25, 3/25, 4/29 | 6-7pm | FIS

### Young Hoosier Award Homeschool Book Club\* | Ages 8-11

Tue. 2/24, 3/31, 4/21 | 2-3pm | NOB

### Gathering STEAM\* | Ages 5-7

Wed. 2/25, 3/25, 4/22 | 3-4pm | NOB

### Nerf Wars | Ages 6-11

Sat. 2/28 | 2-3pm | FIS

### The Whisk Kids\* | Ages 6-11 & their Families

Sun. 2/1, 3/1, 4/26 | 2-3:30pm | NOB

### Wonder Lab\* | Ages 3-7

Sat. 3/21, 4/11 | 11am-12pm | NOB

Wed. 4/8 | 2-3pm | FIS

### Up 2 STEAM\* | Grades K-2

Wed. 2/11, 3/11, 4/22 | 6-7 pm | FIS

### Breakpoint | Families

Thu. 2/12, 3/12, 4/9 | 3:30-4:45pm | FIS

Mon. 4/6 | 3:30-4:45pm | FIS



SATURDAY, FEBRUARY 7 | 9 AM - 6 PM | FISHERS & NOBLESVILLE  
SCAVENGER HUNTS, PHOTO OPS, GIVEAWAYS, TOT TUNES!



### Pig the Pug Party\* | Ages 2-6

Mon. 3/2 | 10-11am | NOB

### Toddler Rave | Toddlers-Preschoolers

Wed. 3/4 | 11-11:45am | NOB

### Unicorn Diaries Library Adventure\* | Ages 5-9

Tue. 3/3 | 6-7pm | FIS

### A Very Special The Very Hungry Caterpillar Celebration\* | Ages 0-5

Fri. 3/20 | 10-11am | NOB

### Meet the Author: Kwame Mbalia\*

Tue. 3/24 | 6-7pm | FIS



### Orchestra Storytime | 0-5

Fri. 3/27 | 10:30-11am | FIS

### Garfield Interactive Movie\* | Families

Sun. 3/29 | 2-4pm | FIS

### Family Bingo | Families

Wed. 4/8 | 2-3pm | NOB

### Ballet Storytime | Ages 2-5

Sat. 4/11 | 10-11am | FIS

### Fairy Gnome Homes\* | Grades K & up

Sat. 4/18 | 10-11am & 11:15am-12:15pm | NOB

### Sonic the Hedgehog Interactive Movie\* | Families

Sun. 4/26 | 2-4pm | FIS

### Movie Matinee: Gabby's Dollhouse: The Movie\* | Families

Fri. 4/3 | 2-4pm | NOB

### Diary of a Wimpy Kid Library Fun!\* | Ages 8-12

Tue. 4/14 | 6-7pm | FIS

## Storytimes & Music Programs

### Noblesville Branch

#### Babytime | Ages 0-2

Mon. Feb. 2, 16, 23; Mar. 16, 23, 30; Apr. 13, 20, 27 | 9:30-10am

Wed. Feb. 4, 11, 18, 25; Mar. 18, 25; Apr. 1, 8, 15, 22, 29 | 10:30-11am

#### Storytime | Ages 2-5

Mon. Feb. 2, 16, 23; Mar. 16, 23, 30; Apr. 13, 20, 27 | 10:30-11am

Thu. Feb. 5, 12, 19, 26; Mar. 19, 26; Apr. 2, 9, 16, 23, 30 | 9:30-10am & 10:30-11am

#### Tot Tunes | Ages 0-5

Tue. Feb. 3, 10, 17, 24; Mar. 17, 24, 31; Apr. 7, 14, 21, 28 | 9:30-10am

Wed. Feb. 4, 11, 18, 25; Mar. 18, 25; Apr. 1, 8, 15, 22, 29 | 10:30-11am

#### Pre-K Explorers | Ages 3-5

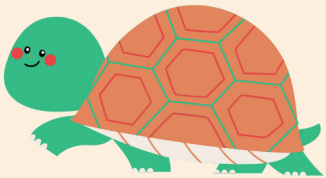
Thu. Feb. 5, 12, 19, 26; Mar. 19, 26; Apr. 2, 9, 16, 23, 30 | 1-2pm

#### Boogie Woogie Weekend | Ages 0-5

Sat. Feb. 28, Mar. 28, Apr. 25 | 11-11:30am

#### Sunday Stories | Ages 2 and up

Sun. Feb. 22, Mar. 15, Apr. 19 | 2-2:30pm



### Fishers Branch

#### Babytime | Ages 0-2

Wed. Feb. 4, 11, 18, 25; Mar. 18, 25; Apr. 1, 8, 15, 22, 29 | 9:30-10am

Thu. Feb. 5, 12, 19, 26; Mar. 19, 26; Apr. 2, 9, 16, 23, 30 | 9:30-10am

#### Storytime | Ages 2-5

Mon. Feb. 2, 9, 16; Mar. 16, 30; Apr. 6, 13, 27 | 9:30-10am

Tue. Feb. 3, 10, 17, 24; Mar. 17, 24, 31; Apr. 7, 14, 21, 28 | 9:30-10am & 10:30-11am

Thu. Feb. 5, 12, 19, 26; Mar. 19, 26; Apr. 2, 9, 16, 23, 30 | 10:30-11am

#### Tot Tunes | Ages 0-5

Mon. Feb. 2, 9, 16; Mar. 16, 30; Apr. 6, 13, 27 | 10:30-11am

Wed. Feb. 4, 11, 18, 25; Mar. 18, 25; Apr. 1, 8, 15, 22, 29 | 10:30-11am

#### Pre-K Explorers | Ages 3-5

Tue. Feb. 3, 10, 17, 24; Mar. 17, 24, 31; Apr. 7, 14, 21, 28 | 1-2pm

#### Sunday Stories | Ages 2 and up

Sun. Feb. 8, Mar. 8 | 2-2:30pm



# For Teens

Check the online events calendar for full event details at [hepl.libnet.info/events](http://hepl.libnet.info/events). Programs with an asterisk (\*) require registration.

### A Complete Guide to Standardized Testing\*

Tue. 2/3 | 6-7:30pm | NOB

Designed specifically for high school students, this program walks you through what standardized tests are, why (and when) they matter, and how they fit into your college and career plans.



### Neurodivergent Teen Hangout\*

Thu. 2/5, 3/5, 4/2 | 6-7pm | NOB

Thu. 2/19, 3/26, 4/16 | 5:30-6:30pm | FIS

Feb. & April: Game Night | March: Spring Fest

### After-Hours Mini Golf\*

Fri. 2/6 | 5:45-7:30pm | FIS

### Palentine's Day: Paint with Your Pals\*

Tue. 2/10 | 5:30-7pm | NOB

Wed. 2/11 | 5:30-7pm | FIS

Create paintings with a K-Pop Demon Hunter theme with other teens to celebrate Palentine's Day!

### Teen Winter Olympics\*



Mon. 2/16 | 2-3pm | FIS

Get into the Olympic spirit by competing in different mini games to see who will take home the gold!

### Crafty Teens\*

Tue. 2/17, 3/10, 4/14 | 6-7pm | NOB

Wed. 2/18, 3/11, 4/8 | 6-7pm | FIS

Feb: Bad Art Night | March: Perler Beads | April: Paint Pots and Plant Seeds from the Seed Library

### Teen Video Game Club\*

Tue. 2/24, 3/17, 4/28 | 6-7:30pm | NOB

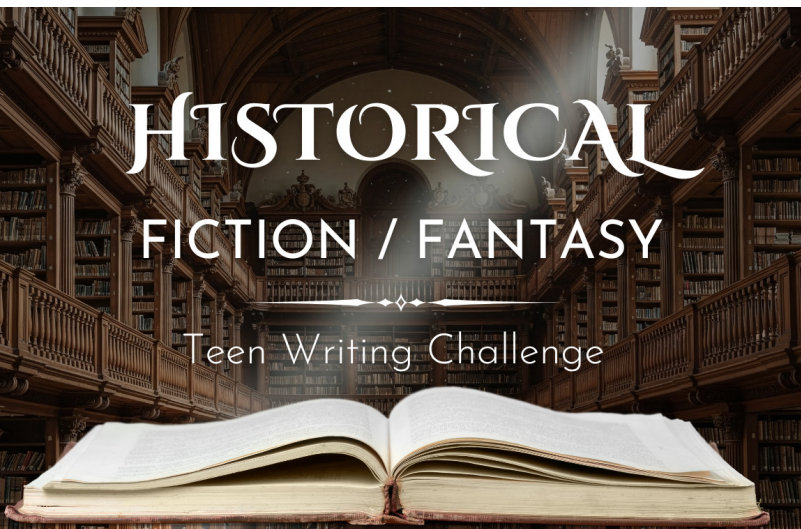
Wed. 2/25, 3/25, 4/22 | 6-7:30pm | FIS

April: VR

### Teen Video Game Tournament\*

Sat. 2/28 | 2-3pm | FIS | Just Dance

Tue. 3/31 | 2-3pm | NOB | Nintendo Switch Sports



### Teen Writing Challenge

#### February 1-28

Challenge yourself to write a Historical Fiction or Historical Fantasy short story! Teen writers can submit an original short story for a chance to win a gift card and have their story shared on our website.



### Meet the Author: Kwame Mbalia\* Tue. 3/24 | 6-7 pm | FIS



Join us to hear from award-winning author Kwame Mbalia, author of the Tristan Strong and Jax Freeman series!

Kwame is a husband, father, writer, a New York Times bestselling author, publisher, and a former pharmaceutical metrologist (in that order). A Howard University graduate and a Midwesterner now in North Carolina, he survives on Dad jokes and Cheez-Its.

Following the program, Kwame will be available to sign books. LoudMouth Books will be onsite with a selection of books for purchase.

### After-Hours Laser Tag\*

Fri. 3/13 | 5:45-7:30pm | NOB

Fri. 4/3 | 5:45-7:30pm | FIS

### Amusement Park Mishap Teen Breakout Room\*

Tue. 4/7 | 3-4pm | NOB

### Teen Gourmet: French Toast\*

Thu. 4/9

12-1:30pm | NOB

Sat. 4/11

12-1:30pm | FIS



### Life Skills: Healthy Relationships\*

Tue. 4/21 | 6-7pm | NOB

Join Prevail Inc. of Hamilton County as they invite teens to learn how to stay safe in their friendships and other relationships.

# For Teens & Adults

### Gamers Guild\*

Sun. 2/1, 3/1, 3/29, 4/26 | 1-5pm | NOB

### Acing the Interview\*

Mon. 2/16 | 6-7:30pm | NOB

### Documentary Film Night: Waste Land\*

Tue. 2/17 | 6-8pm | FIS

### Artemis: Returning to the Moon with Michelle Nichols\*

Tue. 2/24 | 6:30-7:30pm | Virtual  
Learn about NASA's Artemis II mission, which is scheduled to launch in April 2026 and will send four astronauts around the Moon and back as a test of the new Orion spacecraft.



### Notes on Blindness: A Virtual Reality Experience\*

Tue. 3/17 | 5:30-6:15pm & 6:30-7:15pm | NOB

For Disability Awareness Month, join us for this award-winning narrative virtual reality experience. Using a Meta Quest 2 VR headset, you will discover a world beyond sight.

### Cool Careers: Wedding Planner\*

Wed. 3/18 | 6-7pm | FIS

### Cascadia & Beyond: An Earth Day Game Night\*

Tue. 4/21 | 5:30-7:30pm | NOB

Celebrate Earth Day at the library with an open gaming event! Explore board games that highlight nature, sustainability, and the environment while enjoying a fun and social atmosphere.

### Online Job Search Basics\*

Mon. 4/27 | 6-7:30pm | NOB



# For Adults



Check the online events calendar for full event details at [hepl.libnet.info/events](https://hepl.libnet.info/events). Programs with an asterisk (\*) require registration.

**Growing Citrus in the Midwest\***

Thu. 2/5 | 6-7:30pm | FIS

**Virtual Tai Chi with Kayle\***

Every 1st and 3rd Monday | 9:30-10:30am | Virtual

**The Write Stuff: A Virtual Adult Writers' Group\***

Mon. 2/9, 3/9, 4/13 | 6:30-7:30pm | Virtual

**FlexAbility\***

Every Tuesday beginning 2/10 | 9:30-10:15am | NOB

**Book Speed Dating: Find Your Perfect Literary Match\***

Tue. 2/10 | 6-6:30pm or 7-7:30pm | NOB

**Medicare 101 presented by SHIP**

Wed. 2/11 | 6-7:30pm | FIS & Thu. 2/19 | 6-7:30pm | NOB

**Adult Virtual Craft Series\***

Thu. 2/12 & 4/9 | 6:30-7:45pm | Virtual

**Acing the Interview\***

Mon. 2/16 | 6-7:30pm | FIS

**Feel-Good Friday Chair Yoga\***

Fri. 2/20, 3/20, 4/10 | 2-2:45pm | FIS

**Artemis: Returning to the Moon with Michelle Nichols\***

Tue. 2/24 | 6:30-7:30pm | Virtual

Learn about NASA's Artemis II mission, launching April 2026.



**Essential Soft Skills for Employment & Career Growth with Ivy Tech Community College\***

Wed. 2/25 | 5-7:30pm | FIS

**Community Blood Drive\***

Wed. 2/25 | 2:30-6:30pm | FIS

Thu. 4/23 | 2:30-6:30pm | NOB

**The Beginner's Guide to Foraging with Hoosier Forager\***

Sat. 3/7 | 2-4pm | FIS

## Book Clubs

Visit [hamiltoneastpl.org/lets-read](https://hamiltoneastpl.org/lets-read) for meeting locations and book selections.

**Books on Tap**

Wed. 2/25, 3/25, 4/22 | 6:30-7:30pm

**Fiction Fans**

Thu. 2/12, 3/12, 4/9 | 6:30-7:30pm

**Mystery Loves Company**

Wed. 2/18, 3/18, 4/15 | 6:30-7:30pm

**On the Same Page**

Tue. 2/10, 3/10, 4/14 | 6:30-7:30pm

**Paging Through Time**

Wed. 2/25, 3/25, 4/22 | 2-3pm

**Read Around the World**

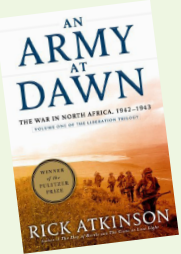
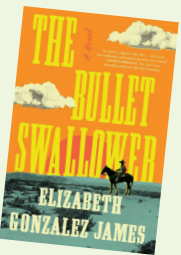
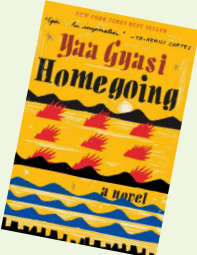
Mon. 2/2, 3/2, 4/6 | 6:30-7:30pm

**Speculative Fiction Guild**

Mon. 2/9, 3/9, 4/14 | 6:30-7:30pm

**True Brew Nonfiction**

Tue. 2/24, 3/24, 4/28 | 7-8:30pm



**Crafternoon: Coloring Quote Bookmarks\***

Sat. 3/7 | 3-4:30pm | NOB

Celebrate International Women's Day & Women's History Month by watching a documentary and coloring bookmarks.

**Career Charting Workshop Series with Beverly Barr\***

Mon. 3/9, 3/16, 3/23 | 5:30-7:30pm | NOB



**Notes on Blindness: A Virtual Reality Experience\***

Tue. 3/17 | 5:30-6:15pm or 6:30-7:15pm | NOB

**Become a Dementia Friend**

Wed. 3/18 | 6:30-7:30pm | FIS

**Autism 101\***

Thu. 3/19 | 6:30-7:30pm | FIS

**Library 101: Intro to HEPL + Branch Tour\***

Fri. 3/20 | 10-11am | FIS & Fri. 4/24 | 11am-12pm | NOB

**Decluttering as Self Care: How to Begin\***

Mon. 3/23 | 6-7:30pm | FIS



**Enchanted Abodes: A DIY Fairy House Workshop\***

Thu. 3/26 | 6-7:45pm | FIS

**Cascadia & Beyond: An Earth Day Game Night**

Tue. 4/21 | 5:30-7:30pm | NOB

**Foraging for Morels with Hoosier Forager\***

Thu. 4/23 | 5:30-7:30pm | FIS

**Belle Musique**

**Valentine's Day Concert\***

Sat. 2/14 | 2-3pm | FIS

Supported by the Friends of the Hamilton East Public Library. All ages are welcome.



## Computer Classes

**Tech Time: Drop-in Assistance with Devices and Library Apps (No registration required)**

Wed. 2/4 | 2-4pm | FIS & Thu. 2/19 | 2-4pm | NOB

Thu. 3/5 | 5-7pm | NOB & Mon. 3/16 | 2-4pm | FIS

Thu. 4/9 | 10am-12pm | FIS & Wed. 4/15 | 2-4pm | NOB

**Microsoft Word Basics\***

Mon. 2/9 | 2-3:30pm | FIS

**Microsoft Excel Basics\***

Thu. 2/26 | 2-3:30pm | NOB

Mon. 3/30 | 6-7:30pm | FIS

**Apple iOS Basics: iPhone and iPad\***

Mon. 3/2 | 10-11:30am | FIS

**Introduction to Graphic Design Using Canva\***

Tue. 3/3 | 6-7:30pm | NOB

**Modern Resume Creation in Google Docs with AI Insights\***

Thu. 3/12 | 2-3:30pm | NOB

**Computer Basics: Windows 11\***

Tue. 3/24 | 2-3:30pm | NOB

**Navigating the AI Age with Confidence\***

Tue. 4/7 | 6-7:30pm | NOB

**Email Basics\***

Thu. 4/16 | 10-11:30am | FIS

**Protecting Your Privacy Online: Cybersecurity Basics\***

Mon. 4/20 | 10-11:30am | NOB

**Mobile Device Basics: Android\***

Mon. 4/27 | 6-7:30pm | FIS

**Online Job Search Basics\***

Mon. 4/27 | 6-7:30pm | NOB

**Internet Basics\***

Wed. 4/29 | 6-7:30pm | NOB



# Crossroads Discovery Center



Check the online events calendar for full event details at [hepl.libnet.info/events](http://hepl.libnet.info/events). Programs with an asterisk (\*) require registration.

### G.A.B.- Genealogy Advisory Board

Thu. 2/5, 3/5, 4/2 | 2:30-3:30pm | NOB

Join Crossroads Discovery staff and Nancy Massey, Hamilton County Genealogist, for this lively discussion of all things genealogy.

### Blast from the Past: The 1960s in Noblesville\*

Wed. 2/11 | 6:30-7:30pm | NOB

In 1960, a film crew traveled to Noblesville to create a movie advertising the city. The preserved film is a showcase of late 1950s styles with both familiar and forgotten landmarks of Noblesville.

### FamilySearch.Org: Search Party\*

Sat. 2/28 | 11am-12pm | NOB

Make the most of your searches on FamilySearch.org! Don't be overwhelmed by the billions of records. Learn what can be found on FamilySearch and then discover some tips and tricks to go beyond a simple name search.

### Saving My Family's Memories with Digital Media Labs\*

Thu. 3/12 | 6:30-7:30pm | NOB

Learn about the equipment available in the CRDC to preserve your family history. Digitize slides, film negatives, VHS, 8mm and other formats to be able to watch, listen, and share them.

### Newspapers.Com & PERSI: Search Party\*

Sat. 3/28 | 11am-12pm | NOB

Learn how to access newspaper articles by using the library's database, Newspapers.com, and the PERSI index from home.



Christy Brocken. Photo by Sadie Hunter.

### First Farmers at Strawtown Koteewi Park\*

Thu. 4/16

6:30-7:30pm | NOB

Hamilton County Parks and Recreation's Christy Brocken will explore the relationship between plant remains recovered from the archaeological record and how archaeologists theorize they were utilized by the people who originally cared for them here in Hamilton County and the surrounding areas.

### Working on the Railroad: Following the Tracks of Railroads and Family History in the U.S.\*

Wed. 4/22 | 6:30-7:30pm | NOB

Learn about the development of US railroads and how they changed the way folks lived and worked. Discover valuable resources to use to research your railroading ancestors.

### Finding Secrets in Your Old Photos\*

Sat. 3/7 | 11-12pm | NOB

Have you ever found a photo in your family collection and wondered about the date or location or even what the people are doing? This program will help you find information and sources that can help you to be a photo detective.



Join us throughout March for our annual Disability Awareness Month celebration as we raise awareness and share perspectives on the lived experiences of individuals with physical and intellectual disabilities in our community. Hosted by the Fishers Advisory Committee on Disability, this month-long celebration features a variety of special events and initiatives taking place across the city of Fishers. Highlights include the return of the Ally Campaign, which encourages residents to become active advocates for disability inclusion. Learn more at [fishersIN.gov/DisabilityAwareness](http://fishersIN.gov/DisabilityAwareness), and discover how the Hamilton East Public Library is participating through the featured events listed on the right.

# Disability Awareness Month



### Disabilities Awareness Exhibit | March 1 - 28

Part of the Fishers' Arts Council's March Disabilities Month celebration, this Ignite Studio exhibit promotes inclusion and highlights the creative abilities of all community members. This exhibit features art by individual artists and those affiliated with organizations providing services to individuals with disabilities.

### Wax Resist Art with Teaching Artist Wendy Kiefel

Sat. 3/7 | 11am-12:30pm & 2-3:30pm | IGN

Learn step-by-step how to create images with crayon, ink and masking tape in this all-abilities class. Ages. 13+. Registration required.

### Notes on Blindness: A Virtual Reality Experience

Tue. 3/17 | 5:30-6:15pm or 6:30-7:15pm | NOB

Join us for this award-winning narrative virtual reality experience using a Meta Quest 2 VR headset. Registration required.

### Become a Dementia Friend

Wed. 3/18 | 6:30-7:30pm | FIS

Understand and appreciate the perspective of someone living with dementia and learn skills for more effective communication. Registration requested.

### Autism 101

Thu. 3/19 | 6:30-7:30pm | FIS

Join Rachel Deaton to get a foundational understanding of Autism Spectrum Disorder (ASD), including common characteristics, communication styles, and sensory differences.

### Neurodivergent Teen Hangout

Thu. 2/5, 3/5, 4/2 | 6-7pm | NOB

Thu. 2/19, 3/26, 4/16 | 5:30-6:30pm | FIS

Feb. & April: Game Night | March: Spring Fest. Registration required.



# Ignite Studio

Check the online events calendar for full event details at [hepl.libnet.info/events](http://hepl.libnet.info/events). Programs with an asterisk (\*) require registration.

Learn about art through the many interpretations of mixed media during 1st quarter programming at Ignite. Mixed media refers to artwork that incorporates more than one medium or material. This encourages artists to experiment with various techniques, textures, and materials to blend and juxtapose elements.

## Mixed Media Drop-Ins | All Ages

**Lunar New Year Horse Puppets** | Jan. 26 - Feb. 8

**Love Bugs** | Feb. 9 - 22

**Collages Inspired by Howardena Pindell** | Feb. 23 - Mar. 8  
In celebration of Black History Month & Women's History Month

**Mixing Media!** | March 9 - 22

**Embossed Paper Decorations** | March 23 - April 5

**Tissue Paper Flowers** | April 6 - 19

## Ignite Maker Lab in Noblesville

Get certified on equipment with these classes at the Maker Lab\*:

Long Arm Quilting: Tuesdays

Direct to Garment/Film Printing: Alternating Tuesdays and Wednesdays

Embroidery: Alternating Wednesdays and Saturdays

3D Printing: Alternating Thursdays and Saturdays

\*Consult our Calendar of Events or contact the Maker Lab for times and more info.



### Get Creative using Gelli Plates with Teaching Artist Jessica Green | Ages 13+\*

Sat. 2/7 | 11am-12:30pm & 2-3:30pm | IGN

### Sculpture with Paper and Wire | Ages 16+\*

Sat. 2/21 | 11am-12:30pm | IGN

Tue. 2/24 | 6-7:30pm | IGN

### Mixed Media Art Field Trip for Adults at Newfields | Ages 18+\*

Wed. 2/25 | 11am-12:30pm | IGN



### Wax Resist Art with Teaching Artist Wendy Kiefel | Ages 13+\*

Sat. 3/7 | 11am-12:30pm & 2-3:30pm | IGN

### Mixed Media and the Riso | Ages 13+\*

Sat. 3/28 | 11am-1pm | IGN

### Spring Break Art Lab:

#### Tissue Paper Prints-Chine Collé | Ages 8+\*

Wed. 4/8 | 1-3pm | IGN

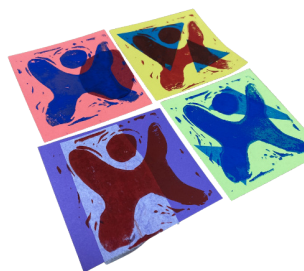
#### Printing Press Monoprints | Ages 16+\*

Tue. 4/14 | 6-7:30pm | IGN

Sat. 4/18 | 11am-12:30pm | IGN

#### Surface Design on Wood with Teaching Artist Philip Ramilo | Ages 16+\*

Sat. 4/25 | 11am-12:30pm & 2-3:30pm | IGN



This program is sponsored by the HEPL Foundation.

## Saturday, March 21 | 9am-4pm

Showcasing the ways artists elevate and utilize Ignite's resources, Ignite Studio will host its third annual Make-Off. Selected artists will compete to make an original piece of art related to Ignite equipment, kits, or other in-house materials to highlight the creative possibilities involved in making. Artists will be given 6 hours to complete a work of art which will culminate in the awarding of monetary prizes. Patrons will be able to watch the process of creating art, take part in hands-on activities and participate in a patron art challenge. This year's theme is mixed media. Make your way to Ignite for an exciting and fun day!

### Art activities for the public include:

- First 50 patrons receive art kits!
- Make your own mixed media artwork with our mini collage kits complete with shadow box frame.
- Add to our community assemblage wall.
- Create a layered metallic mandala with various materials.

### Register to participate in our public Maker Challenge: Tissue Paper Prints-Chine Collé\*

Ages 8 and up | 10am-12pm

All supplies provided

Art supply 'gift baskets' will be awarded in the following categories: Youth, Teen, Adult, and Adult & Child

Judging awards given out at 12:30pm

## Don't Miss These Exhibits!

**The 700 Collection Exhibit** | February 28 - May 15

The 700s in the Dewey Decimal System is all about the arts. Stroll through the gallery to view a collection of work that celebrates many different mediums and genres within this classification. Join us for a reception on March 5th from 6-7pm to engage with the artists, participate in a themed activity and support local art. Winners of juried work will be announced, including Director's Choice.



**Disabilities Awareness Exhibit** | March 1 - 28

Part of the Fishers' Arts Council's March Disabilities Month celebration, this exhibit promotes inclusion and highlights the creative abilities of all community members. This exhibit features art by individual artists and those affiliated with organizations providing services to individuals with disabilities.



## Maker Rally

The Hamilton County Libraries Maker Rally from February - April 2026 involves Carmel Clay Library's Digital Media Lab, Westfield Washington Library's Makerspace, and Hamilton East Library's Ignite Studio. Design, cut, and paint a wooden toy using resources at each of the libraries.

Pick up a Maker Rally Zine at any of the branches to get more info and participate. All ages welcome.

## Documentary Film Night: Waste Land\*

Tue. 2/17 | 6-8pm | IGN | Ages 13+

Watch the documentary *Waste Land* (NR) featuring giant portraits created out of mixed materials from the trash. Filmed over nearly three years, *Waste Land* follows renowned artist Vik Muniz as he journeys from his home base in Brooklyn to his native Brazil and the world's largest garbage dump located on the outskirts of Rio de Janeiro.





# Crowing Together

## How a Seed Library Helped a School Garden Bloom

Q&A with  
Jennifer Jacks,  
SCE Counselor



Photo by Claire Robertson

From an underutilized outdoor space to a thriving hub of curiosity and color, the Sand Creek Elementary School (SCE) garden has become a living example of what can grow through collaboration and community support. Inspired by the groundwork laid by former staff and renewed by a shared vision among educators and students, the garden’s revival took root with the help of the HEPL Seed Library. This partnership not only provided seeds, guidance, and expertise, but also opened the door to hands-on learning, student ownership, and a deeper connection to nature, proving that when schools and libraries grow together, the results can be both beautiful and educational.

**Q: What inspired your school to start a garden, and how did the idea to partner with the HEPL Seed Library first come about?**

The SCE garden was originally started by a dedicated group of former staff members, and we are excited to continue building upon the foundation they created. We cleaned up the outdoor garden space, shared new opportunities with our building staff, and worked together to create a plan to bring it back to life. With the gardens getting a spring refresh, we felt inspired to plant and bring new life to this space. We were familiar with the Seed Library, but it had been years since we accessed it and decided this was the perfect opportunity to revisit this wonderful community opportunity.

**Q: Can you describe the process of collaboration with the library? Did they offer any guidance or resources that helped you plan your garden?**

We reached out to the library to inquire about the steps and process to obtain seeds and were quickly greeted with a helpful voice and direction to go. We were given great suggestions and ideas to think about, including the types of plants, plants versus vegetables, and germination and growth time. We also discussed what plants were hardy, could tolerate the sunshine, and how much water they would require, which were all great suggestions as we knew summer break would occur during this window too. We appreciated the recommendations of plant types that would provide bright colorful blooms during the summer and into Back to School.

**Q: How did you set up the garden once you had received and prepared your seeds? What role did students play in caring for the garden throughout the year?**

The garden design was intentionally simple so students could select the plants that interested them most. They also learned to think like gardeners—reviewing plant height, color, and overall compatibility with the raised beds before making their final choices.



Photo by Claire Robertson

Students were involved in planting from the very beginning—tending to repairs and adjustments of the raised garden beds, prepping soil, placing seeds, and labeling each bed. Throughout the remainder of the school year, identified classes rotated watering duties, monitored plant growth, and helped pull weeds or refresh soil as needed. Their hands-on care kept the garden healthy and growing. Students loved being outdoors—checking on the plants’ progress, noticing the changes each week, and simply enjoying the fresh air and garden space.

**Q: How has the garden and the Seed Library partnership impacted your school community?**

Our partnership with the Seed Library is only beginning, and we’re already seeing our garden come to life. After winter, we’ll check to see what made it through the colder months and plan any new planting.

We’re so fortunate to have this wonderful resource right down the road, and we are deeply appreciative.

With all the wonders and questions our students are asking, it’s clear that we will most definitely continue expanding the garden and the learning it inspires!



The Seed Library has become one of the best loved collections the library offers. In 2025, HEPL lent out more than 88,000 seed packets. The many stories, successes, and photos you’ve shared guide our collection and demonstrate the impact the Seed Library has on our communities. There are two key dates to keep in mind for when seeds will be available. On **February 9**, select seed varieties will be available through the Seed Library. These varieties – such as tomatoes, oregano, and many native flowers – should be started indoors several weeks prior to planting outside since they require extra growing time in warm temperatures. On **March 9**, all the seeds will be available for checkout. The Seed Library is sponsored by the HEPL Foundation.



Photos provided by Sand Creek Elementary





# LIBRARY OF THINGS

at the Hamilton East Public Library

## Borrow Specialty Items From the Library!

Hamilton East Public Library offers a special collection of non-traditional items, including yard games, media equipment, garden tools, all NEW memory care kits, and more!



Check out the Library of Things collection here:



## LIBRARY INFO

### LOCATIONS

#### **Noblesville Library**

One Library Plaza  
Noblesville, IN 46060  
317.773.1384

#### *Crossroads Discovery Center*

317.770.3236

#### *Ignite Maker Lab*

317.770.3247

#### **Fishers Library**

Five Municipal Drive  
Fishers, IN 46038  
317.579.0300

#### *Ignite Studio*

317.579.0331

### LIBRARY HOURS

#### **Monday – Thursday**

9:00 am – 8:00 pm

#### **Friday – Saturday**

9:00 am – 6:00 pm

#### **Sunday**

12:00 pm – 6:00 pm

### FOLLOW US



[hamiltoneastpl.org](http://hamiltoneastpl.org)

### LIBRARY CLOSURES

**Friday, March 6** | Staff Day

**Sunday, April 5** | Easter



**HAMILTON EAST**  
PUBLIC LIBRARY